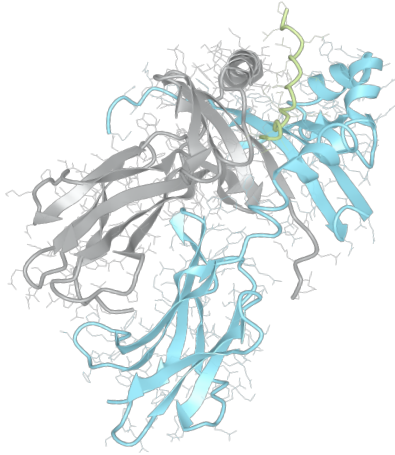


Product datasheet



sHLA- DRB1*09:01 DRA*01:01

DRB1*0901, DRB10901, DRB1*09, DRB09, DR9
DRA*0101, DRA0101, DRA*01, DRA01

Serological Name	DR9
Peptide Load	Endogenous
Modification	Unmodified
Conjugation	Unconjugated
SKU	DRB10901

Product Description

Allele Name	DRB1*09:01 DRA*01:01
HLA Class	HLA Class II
HLA Gene Locus	HLA-DR
Alternative Allele Name A Chain	DRA*0101, DRA0101, DRA*01, DRA01
Alternative Allele Name B Chain	DRB1*0901, DRB10901, DRB1*09, DRB09, DR9
Description	Recombinant, truncated Class II soluble Human Leukocyte Antigen (sHLA), naturally folded and glycosylated, loaded with endogenous peptides.
Serological Name	DR9
Serological Split	-
Allele Frequency [World Population]	
A chain	-
B chain	5.2%

Associated products

[DRB10901bio](#)
[DRB10901pe](#)

Product Specification

Product name	HLA-DRB1*09:01
HLA Species	Human
Host Cell Line Species	Mouse
Clone Designation	C2G5
Tail Specification	ZP
Peptide Load	Endogenous
Modification	Unmodified
Conjugation	Unconjugated
Complexity	Monomer
Protein Format	Recombinant, truncated, zipper-stabilized, soluble, non-modified, non-labeled, endogenously loaded
Storage Temperature	4°C (This product should be stored undiluted)
Form	Liquid
Concentration	1000.0 µg/ml
Formulation	PBS/0.02% Sodium Azide
pH	7.4
Purification Method	Affinity Chromatography
Grade	Research Use Only [RUO]
Authentication Verification	Sequence Based Typing

Protein Sequences

Alpha Chain Sequence	<p>IKEEHVIIQA EFYLNPDQSG EFMDFDGDGDE IFHVDMAPKE TVWRLEEFGR FASFQAQAL ANIAVDKANL EIMTKRSNYT PITNVPPEVT VLTNSPVELR EPNVLICFID KFTPPVVNVV WLRNGKPVTT GVSETVFLPR EDHLFRKFHY LPFLPSTEDV YDCRVEHWGL DEPLLKHWEF DAPSPLPETT EVDGGGGGAQ LEKELQALEK ENAQLEWELQ ALEKELAQ</p>
Beta Chain Sequence	<p>GDTQPRFLKQ DKFECHFNG TERVRYLHRG IYNQEENVRF DSDVGEYRAV TELGRPVAES WNSQKDFLER RRAEVDTVCR HNYGVGESFT VQRRVHPEVT VYPAKTQPLQ HHNLLVCSVS GFYPGSIEVR WFRNGQEKA GVVSTGLIQN GDWTFQTLVM LETVPRSGEV YTCQVEHPSV MSPLTVEWRA RSESAQSKVD GGGGAQLKK KLQALKKKNA QLKWKLQALK KKLAQ</p>

Related Products

[DRB10902](#)
[DRB11101](#)
[DRB10701](#)
[DRB11501](#)

Applications

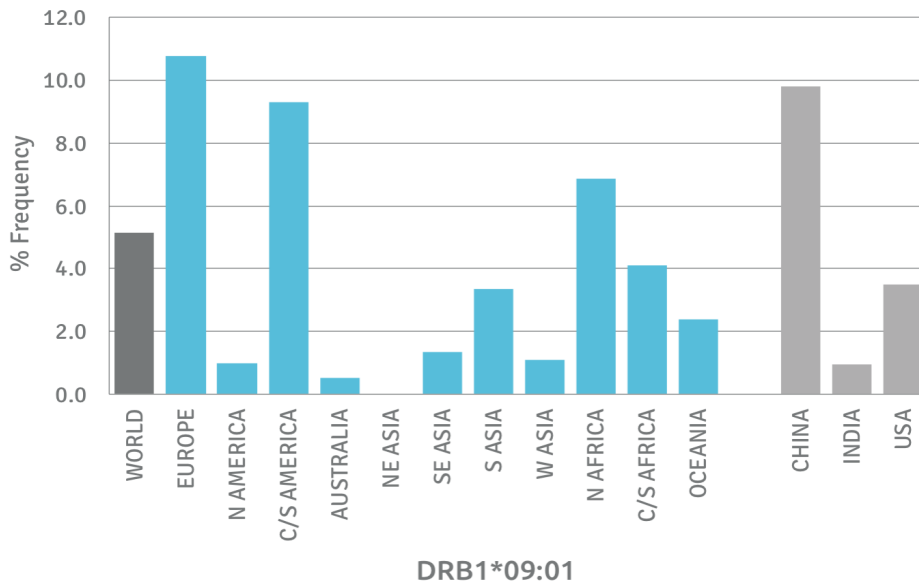
HLA Sandwich ELISAs
HLA Direct ELISAs
HLA-Sera Antibody Assays
HLA Controls in ELISA Assays
HLA Assay Standards
HLA Blocking Assays
HLA Neutralizing Assays
HLA Competition Assays
HLA Bead Assays
HLA Immunization Procedures

Recommended Antibodies

L243

Allele Frequency

Worldwide Allele Frequency



Please note:

ALL PRODUCTS ARE FOR RESEARCH USE ONLY. NOT FOR COMMERCIAL USE IN DIAGNOSTIC PROCEDURES.
For more information, please visit our Policies section on our website. For licensing inquiries, please contact

licensing@hlaprotein.com

 HLA Protein
PURE PROTEIN LLC

